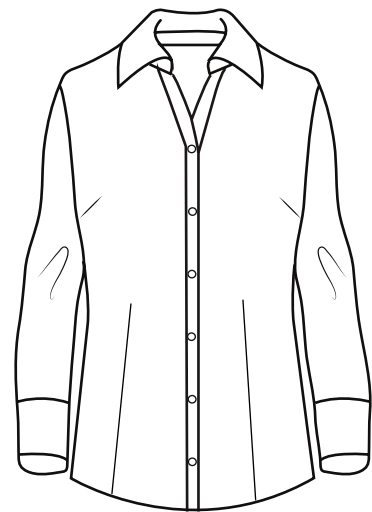


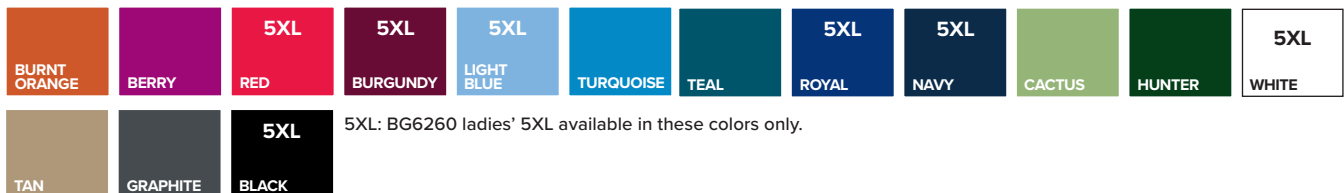
BG6260 Ladies' 3/4 Sleeve Poplin Shirt



- 65/35 Poly/cotton poplin blend
- Easy care
- Stain release
- Lightweight 5.5 oz.
- Wrinkle resistant
- Matching buttons
- 3/4 sleeve
- Spread collar
- Front & back darts for feminine look
- Sizes: S-5XL; 5XL in select colors
- Feminine fit



For a style that won't wear out, look no further than this 5.5 oz. ladies 3/4 sleeve easy-care poplin. This bold button-down shirt is made from a 65% polyester/35% cotton blend, is available in several colors and comes in sizes ranging from S to 4XL (5XL in select colors). It features stain-release technology, wrinkle/crease resistance, a spread collar, hemmed sleeves, a double-back yoke, two back side pleats, no pockets and adjustable cuffs. Don't miss out on this wow-worthy wearable!



5XL: BG6260 ladies' 5XL available in these colors only.

LADIES' SIZES

	XS (2)	S (4-6)	M (8-10)	L (12-14)	XL (16-18)	2XL (20-22)	3XL (24-26)	4XL (28-30)	5XL (32-34)
BUST	30-31	32-33	34-35	36-38	40-42	44-46	48-50	52-54	56-58
SLEEVE	31	31.5	32	32.5	33	33.5	34	34.5	—
BOTTOM	31-32	33-34	35-36	37-39	41-43	45-47	49-51	53-55	—